



Package Contents

- Wireless-G PrintServer
- Setup Wizard CD-ROM
- User Guide on CD-ROM
- USB 2.0 Cable
- Network Cable
- Power Supply
- Quick Installation
- Registration Card

2.4GHz
802.11g

Wireless-G
PrintServer

Quick Installation



1 Connect the PrintServer

Before starting the physical installation, note the PrintServer's default name. The default name is shown in the *Server* field on the sticker located on the PrintServer's back panel.

A Use the USB cable to connect your USB printer to the PrintServer's USB Printer port.

B If you are connecting the PrintServer to your wired network, then plug one end of the Ethernet network cable into the PrintServer's Ethernet port.

Then connect the other end to your router or switch.

C Power on your printer.

D Plug the power adapter into the PrintServer's Power port.

Then plug the other end into an electrical outlet.



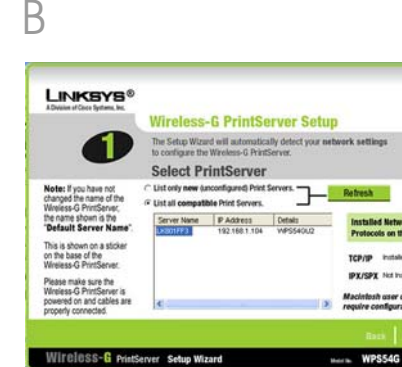
2 Configure the PrintServer

A Insert the Setup CD-ROM into the computer's CD-ROM drive. The Setup Wizard should run automatically. If it does not, click **Start** and choose **Run**. In the field that appears, enter **D:\setupWizard.exe** (if "D" is the letter of your CD-ROM drive).

B On the *Welcome* screen, click **Setup Wizard**.

C The Setup Wizard will search for the PrintServer. After it has been found, the *Wireless-G PrintServer Setup* screen will appear. If this is the first time you have run the Setup Wizard, make sure that **List only new (unconfigured) Print Servers** is selected and your PrintServer is listed by its default server name. If you have previously configured the PrintServer, select **List all compatible Print Servers**. Click **Next**.

D On the *Basic Settings* screen, you may change the Device Name and Domain Name settings if you want. Then click **Next**.



E The *IP Settings* screen will appear. If your network uses a router that automatically assigns IP addresses, select **Automatically obtain an IP address (DHCP)** and click **Next**. If you need to assign the PrintServer a static IP address, select **Set IP configuration manually**, and enter the IP Address, Subnet Mask, and Gateway in the fields provided. Then click **Next**.

F On the *Set PrintServer's Password* screen, enter the PrintServer's default password, **admin**, in the *Current Password* field. Enter a new password in the *New Password* field, and enter it again in the *Verify Password* field. Click **Next**.

G On the *Wireless Settings* screen, enter your wireless network's SSID or name. If your network is set to ad-hoc mode, select the channel at which the network broadcasts its wireless signal. For the Network Type setting, select **infrastructure** if the PrintServer will communicate using an access point or wireless router. Select **Ad-Hoc** if the PrintServer will communicate directly with wireless-equipped computers. Click **Next**.



3 Install and Configure the PrintServer's Driver

H On the *Wireless Security Settings* screen, select a level of WEP encryption, **64 Bit Keys** or **128 Bit Keys**. Then enter a Passphrase to automatically generate a WEP key. Then click **Next**.

If you would like to enter your WEP key manually, leave the *Passphrase* field blank and enter the WEP key on the next screen. Then click **Next**.

I If you used a Passphrase, then a WEP key will appear on the following screen. Otherwise, enter your WEP key in the *Key 1* field. Click **Next**.

J On the *Confirmation* screen, make sure your settings are correct. Click **Yes** to save your new settings.

K On the *Congratulations* screen, click **User Install** to install the PrintServer's driver.



Linksys recommends that you set up your printer and install your printer's driver before you install the PrintServer's driver.

A On the *Print Server Driver Setup Welcome* screen, click **Next**.

B On the *Choose Destination Location* screen, select the location where the driver's folder will be installed. If you want the folder to be installed in a different location, click **Browse** and select the location. Click **Next**.

C The *Select Program Folder* screen will appear. An icon will be added to the program folder listed. If you want, you may change the name of the program folder. Click **Next**.



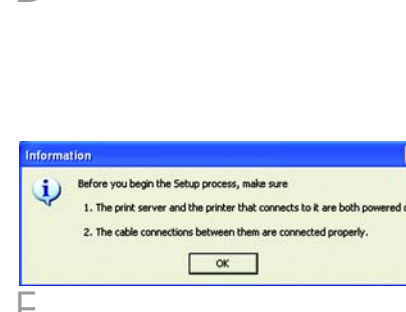
D After the driver is installed, the *Setup Complete* screen will appear. Make sure **Configure Print Driver now** is selected. Click **Next** to end the driver installation and begin the driver configuration.

E Double-click the **Print Driver Setup** icon on your desktop. If you do not see the icon, click **Start, Programs, Print Server Utility**, and **Print Driver Setup**.

F Read the *Information* screen, and click **OK**.

G On the *Printer Port Setup* screen, select a printer port to add, and click **Next**.

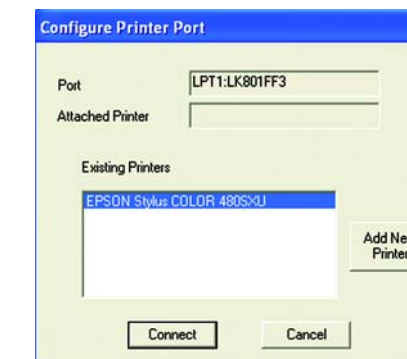
H You will be informed that the PrintServer Port has been added successfully. Click **OK**.



The *Configure Printer Port* screen will appear. Your installed printer(s) will appear in the *Existing Printers* field. Select the printer you want, and click the **Connect** button to associate the printer with your selected printer port. To add another printer, click **Add New Printer** and follow the on-screen instructions.

J When you have finished configuring the PrintServer's driver, click **Close** on the *Printer Port Setup* screen.

Congratulations! The installation of the PrintServer is complete.



LINKSYS
A Division of Cisco Systems, Inc.

For additional information or troubleshooting help, refer to the User Guide on the Setup CD-ROM. You can also call or e-mail for further support.

24-hour Technical Support
800-326-7114
(toll-free from US or Canada)

E-mail Support
support@linksys.com

Website
http://www.linksys.com or
http://support.linksys.com

RMA (Return Merchandise Authorization)
http://www.linksys.com/support

FTP Site
ftp://ftp.linksys.com

Sales Information
800-546-5797 (800-LINKSYS)

Linksys is a registered trademark or trademark of Cisco Systems, Inc. and/or its affiliates in the U.S. and certain other countries. Copyright © 2004 Cisco Systems, Inc. All rights reserved.