

LINKSYS®

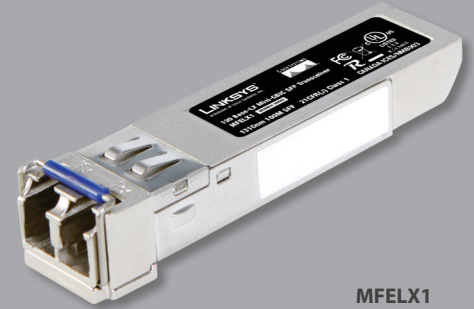
A Division of Cisco Systems, Inc.

MiniGBIC expansion module for fiber optic networking

The MFELX1 is an easy-to-install miniGBIC (SFP) transceiver module that provides a simple way to add 100BASE-LX functionality to your Linksys switch. The module operates at a wavelength of 1310 nanometer and supports single-mode fiber optic cabling. In a typical operating environment, it can achieve distances up to 10 km depending on the total attenuation in the fiber plant.

100BASE-LX is mainly used in metro area networks (MAN) or in large campus networks needing 100 Mbps connectivity between sites. The MFELX1 can be used with wide variety Linksys switches to create solutions that meet the needs for a broad range of customers.

The MFELX1 is a part of the Linksys family of miniGBIC transceiver modules. For other options, see the MFEFX1, MGBSX1, MGBLH1 and MGBTX1.



MFELX1

Supports 100 Mbps speed
up to 10 km for metro and
campus area networks

Integrated spring latch for
easy removal

SFP MSA compliant with
duplex LC connector

Part of the Linksys family of
miniGBIC modules

PRODUCT DATA

100BASE-LX MiniGBIC SFP Transceiver

BUSINESS SERIES

Model: MFELX1



Features

- 1310 nm Fabry-Perot transmitter
- Built-in spring latch for easy module removal
- Low insertion-loss duplex LC receptacle
- Low Electromagnetic Interference (FCC Part 15, Class B)
- Meets FDA and IEC eye safety standards
- Compatible with SFP MSA

100BASE-LX MiniGBIC SFP Transceiver

Specifications

Model	MFELX1
Standards	SFP MSA, ITU-T G.957 and G.958, FDA 21CFR 1040.10,11 and IEC 60825-1,2
Connector Type	Duplex LC
Wavelength Typical (Tx)	1310 nm
Wavelength Range (Tx)	1261 nm (min) to 1360 nm (max)
Wavelength Range (Rx)	1260 nm (min) to 1580 nm (max)

Performance

Average Output Power	-15 dBm (min), -8 dBm (max)
Extinction Ratio (Tx)	8.2 dB (min)
Receiver Sensitivity	-34 dBm (min)
Receiver Overload	-5 dBm (max)

Environmental

Dimensions W x H x D	0.53" x 0.33" x 2.19" (13 x 9 x 56 mm)
Unit Weight	0.63 oz. (0.018 kg)
Power	1W (max)
Certification	FCC Part15 Class B, UL, cUL, ICES-003, CB
Operating Temp.	32 to 158°F (0 to 70°C)
Storage Temp.	-40 to 185°F (-40 to 85°C)
Operating Humidity	10% to 85% noncondensing
Storage Humidity	5% to 90% noncondensing

Package Contents

- 100BASE-LX miniGBIC SFP Transceiver
- Quick Installation Guide

Minimum Requirements

- Switch with miniGBIC port

Linksys

A Division of Cisco Systems, Inc.
121 Theory
Irvine, CA 92617 USA

E-mail: sales@linksys.com
support@linksys.com
Web: <http://www.linksys.com>

Linksys products are available in more than 50 countries, supported by 12 Linksys Regional Offices throughout the world. For a complete list of local Linksys Sales and Technical Support contacts, visit our Worldwide Web Site at www.linksys.com.

PRODUCT DATA

BUSINESS SERIES

LINKSYS[®]
A Division of Cisco Systems, Inc.

Check the product package and contents for specific features supported. Specifications are subject to change without notice. Linksys is a registered trademark or trademark of Cisco Systems, Inc. and/or its affiliates in the U.S. and certain other countries. Copyright © 2006 Cisco Systems, Inc. All rights reserved. Other brands and product names are trademarks or registered trademarks of their respective holders.

Model: MFELX1

6111010NC-RR