

GRAND IP CAMERA PRO

Model 1 : IP CAM + PC CAM

Model 2 : IP CAM + PC CAM + DIVX Movie Capture
Supports 4, 9, 16 Cameras

**Non Night Version
(for sufficient light)**



**Night Version
(for day and night)**



1. Introduction

Grand IP Camera PRO can be used in a PC-less environment. You can use Internet Explorer browser to remotely view and monitor your home or baby room from anywhere in the world via the internet. With an embedded web server, Grand IP Camera PRO is more than just a camera.

GRANDTEC ELECTRONIC CORP.

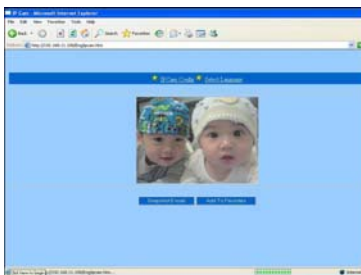
8F, NO.268, LIAN CHENG RD., CHUNG HO CITY, TAIPEI HSIEN 235, TAIWAN, R.O.C.

Tel: +886-2-8227 3588

Fax: +886-2-8227 3589 / 8227 3599

E-Mail: grand@grand.com.twWeb Site: www.grand.com.tw**2. Products Features**

- Sensor : Omni Vision (USA)
- IP Address Auto Detect and Setup.
- Model 1 : 2 in 1 (IP CAM + PC CAM)
- Model 2 : 3 in 1 (IP CAM + PC CAM + Divx Movie capture).
- High Resolution Image Processor (640 x 480 、 320 x 240 、 176 x 144).
- Ethernet RJ-45,10/100 Base-T auto-sense.
- Suitable for most web browser (Windows 2000/ XP & Linux OS).
- Supports Free Video function : Login password is optional.
- Supports multi languages OSD : English, Spanish, Dutch, German, Italian, Russian, French, Japanese, Traditional Chinese.
- 6 infrared LEDs and special lens supports the night vision function. (only for night version)
- Supports many valuable Internet services: Email, FTP, PPPoE, Dynamic DNS, NTP service, User Management, and Image Quality Control.
- USB 1.1 Interface, compatible with Microsoft MSN and NetMeeting.

**Web Browser of Windows XP****Web Browser of Linux**

Product Name:	IPCam
Version:	2.40V_EU
ReleaseTime:	20070417
Administrator Password:	
Password Change:	<input type="password"/>
Password Confirm:	<input type="password"/>
MAC Address:	00 13 FE 03 34 15
Reset Device:	<input type="radio"/> Yes <input checked="" type="radio"/> No
Factory Defaults:	<input type="radio"/> Yes <input checked="" type="radio"/> No
Multiport Defaults:	<input type="radio"/> Yes <input checked="" type="radio"/> No
Port number 1:	0
Port number 2:	80
Video with password:	<input type="radio"/> Yes <input checked="" type="radio"/> No

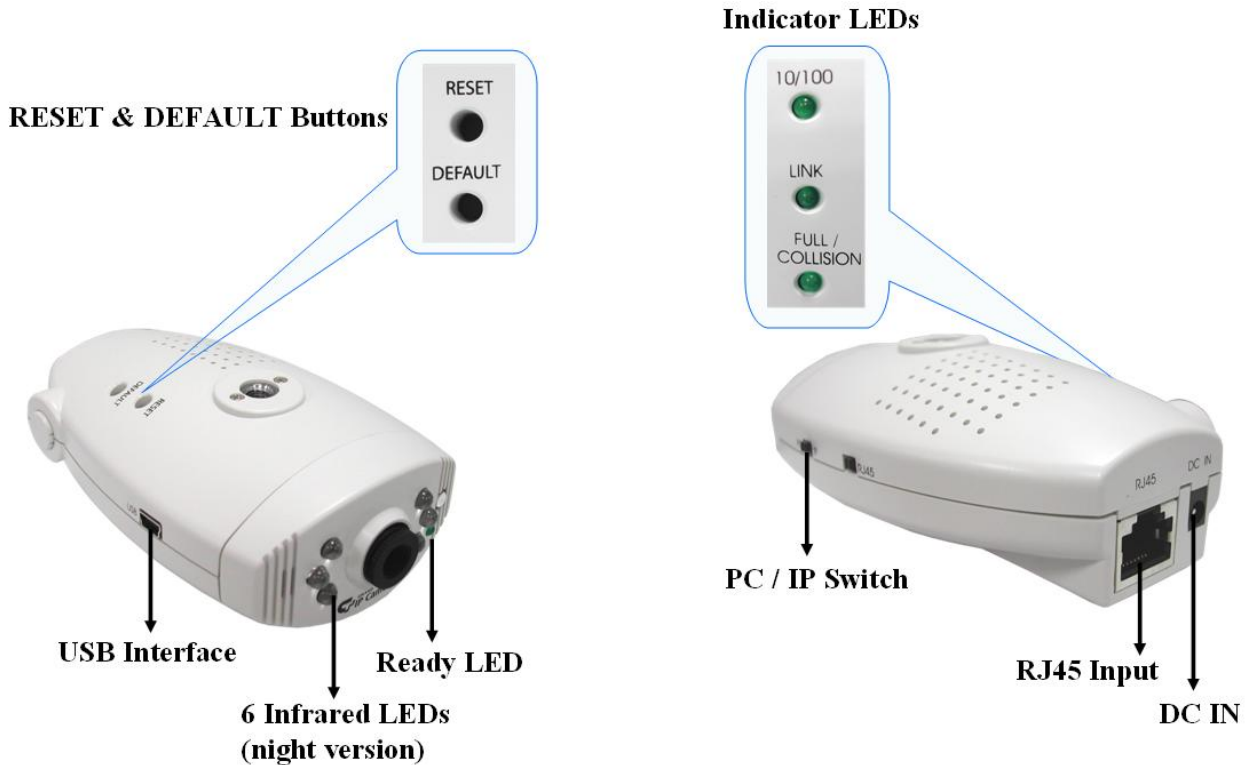
Free Video Function**Bundled Surveillance Software with the following functions (only for Model 2):**

- DIVX Movie capture
- Movie Video File Management: Video File DataBase and Playback Control
- Storage Recyclable: When running out of disk space, files with the earliest date will be overwrite automatically
- Motion Detection: Detect any movement in the mask area and invoke the alarm as soon as movement is detected.

3. System Requirements

- Router(with DDNS or PPPoE function) is required
- 10Base-T Ethernet or 100Base TX Fast Ethernet
- Intel Pentium3 800 MHz, AMD 800 MHz or Faster
- 64M RAM or above
- VGA card with 8MB memory or above
- Microsoft DirectX 9
- Internet Explorer 5.0 or above

4. Hardware Connection and Description



- **Reset Button** : When you change the mode between PC CAM (USB), IP CAM, or set the camera, you must reset (reboot) the system.
- **Default Button** : If you forget the IP address or ID password, you can restore the original default parameters.
- **USB Interface** : Connects to the USB port of PC. (use for PC CAM)
- **6 Infrared LEDs (only for night version)** : To provide excellent image in the dark.
- **Ready LED** : Indicates the IP CAM can be operated when the LED is turned on.
- **PC / IP Switch** : Change the mode between PC CAM (USB) and IP CAM.
- **RJ 45 Input** : Connects to router or PC by RJ-45 cable(cross over wire).
- **DC IN** : Connects to power adapter. (DC 5V)
- **Indicator LEDs** :
 - **10 / 100 T Base LED** : Indicates the network status.
 - **Link LED** : Indicates the IP CAM is connected to the network when the LED is turned on.
 - **Full / Collision LED** : Indicates the transmission way of data is full-duplex or half-duplex.

5. Application Of The Grand IP Camera PRO

- You can use Internet Explorer browser to remotely view and monitor your home or baby room from anywhere via internet.
- Built-in 6 infrared LEDs, let you can also see the excellent image in the dark. (only for night version)
- Supports 4, 9, 16 cameras image recording. (only for model 2)

